

## **1 Bed Apartment in Deluxe Pamporovo Ski Resort Apart Hotel.**

Priced to sell: €23,000.00

Complex Panorama is located beside the very popular Pamporovo ski resort.

Panorama is less than a 1 hour drive from Plovdiv the 2nd largest city in Bulgaria which is serviced by a brand new airport.

The Panorama complex provides high class accommodation amidst the spectacular scenery and fresh air of the magnificent Rhodopi Mountains and is adjacent to the new Snejanka peak ski lift.

The complex has a 24hr reception area, a restaurant and fitness area (including sauna, jacuzzi and gym).

Also the complex is right next door to Perelik Palace hotel which offers a swimming pool with kiddies' area, a nightclub, an excellent restaurant and bars, a snooker room and bowling. Owners and guests of Panorama complex are welcome to use the facilities there.

The apartment is set on the Ground floor of a six storey new building and offers the very spacious living area of 52 sq.m.

### Complex Features

Sauna

Jacuzzi

Gym

Restaurant

Next to Perelik Palace Hotel

Located next to the new ski lift

### Kitchen

\* hob stove cooker

\* Extractor fan

\* Fridge

\* Microwave

\* Kettle

\* Toaster

\* Saucepans

\* Cooking utensils & knives

\* Cutlery

\* Glasses

\* Ironing board

\* Iron

\* Laundry rack

\* Mop & bucket

### Living Room

- \* Three seater sofa
- \* Authentic Fire Place which can be used for burning wood.
- \* Coffee Table
- \* TV
- \* Phone

### Dining Area

- \* Dining table
- \* Four dining chairs
- \* Four place settings

### Bathroom

- \* Walk in Shower
- \* Toilet
- \* Sink
- \* Bathroom mat
- \* Water Boiler

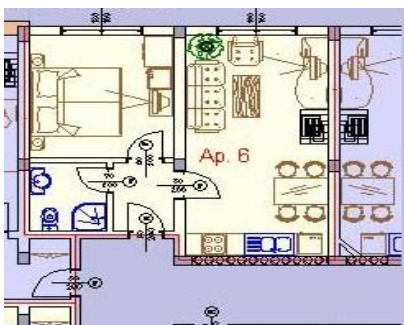
### Double Bedroom

- \* 2 single beds / can be pushed together to make a double also.
- \* Wardrobe
- \* Chest of drawers
- \* Two bedside tables
- \* Rugs
- \* Bed Side Lamps.

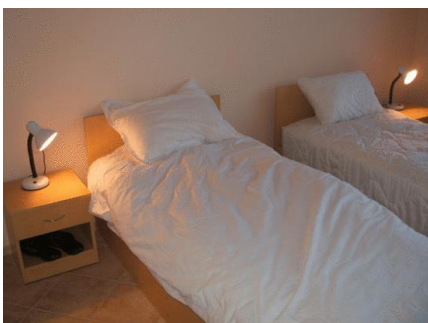
### Linen & Towels

- \* Four bath towels
- \* Four hand towels
- \* Two double sheets
- \* Two double duvets with covers
- \* Four pillows with covers

### Floor Plan



Photographs





**FACILITIES WITHIN THE APARTMENT COMPLEX.**



